

**Installation/Operation Instructions
Custom Metal Fabricators
Power Select**

Installation/Operation Instructions
Custom Metal Fabricators
Power Select
Ver 2.1

1. Introduction
2. Installation
3. Operation
4. Maintenance
5. Trouble Shooting

Drawings

- | | |
|--------|-------------------------------|
| D-1045 | Assembly Drawing |
| D-1046 | Electrical Schematic |
| D-1048 | Hydraulic Schematic |
| Fig. 1 | Retrofit adaptor installation |

1. **Introduction**

- 1.1 The CMF Power Select is a semi automatic hydro-electric positioning system for the CMF "TH" series distributors. The heart of this system is a micro plc that controls and tracks the movement and location of the inner spout. The micro plc accepts input from the operator via a selector switch on the operator station. Once a position is selected by the operator the micro plc compares the destination to the current location and determines a direction of travel selecting the shortest route on full round models. At this point the micro plc engages the hydraulic system and raises the inner spout. Once the inner spout is raised it then rotates to the position selected by the operator and lowers into the outlet stub. The CMF Power Select incorporates several safety and diagnostic routines in the programming to inform the operator of the current status via two lights on the operator station.

2. **Installation**

- 2.1 The CMF Power Select can be ordered as a complete unit factory installed on a new distributor or by itself to be retrofit to an existing distributor installation in the field. Section 2.2 deals with a factory installed unit and section 2.3 deals with a field installed Power Select.
- 2.2 Factory prepared unit
 - 2.2.1 Upon receipt of distributor check for visible signs of damage that may have occurred during shipment. These include scratched paint, dented housing, oil leaking from unit, broken lights or switch operators on electrical enclosures.
 - 2.2.2 Hang the distributor making sure that all outlet spouts are adequately supported to prevent distortion of the distributor housing from weighted spouts.
 - 2.2.3 Mount the operator station in the desired location. Connect the control wires between the terminal strip in the operator station and the terminal strip located in the main panel mounted on the distributor. Observe all applicable codes for control installations.
 - 2.2.4 Connect the power supply wires to the terminals provided in the main panel located on the distributor.
 - 2.2.5 Turn power on to unit.
 - 2.2.6 Installation is complete proceed to section 3 Operation.

2.3 Field Installation

- 2.3.1 Upon receipt of Power Select check for visible signs of damage that may have occurred during shipment. These include scratched paint, dented housing, oil leaking from unit, broken lights or switch operators on electrical enclosures.
- 2.3.2 Remove current distributor control device and install the provided adaptor in to the inner spout support pipe.
- 2.3.3 Locate and drill (4) 7/16 diameter holes in the bottom of the distributor.
- 2.3.4 Raise Power Select unit up to bottom of distributor aligning the adaptor with the gearbox. Insert (4) 3/8 inch bolts through the holes in the distributor bottom and through holes located in the top of the side frames of the Power Select. Insert provided bolt in adaptor through bottom of the gear box.
- 2.3.5 Mount the operator station in the desired location. Connect control wires between the terminal strip in the operator station and the terminal strip located in the main panel mounted on the distributor. Observe all applicable codes for control installations.
- 2.3.6 Connect the power supply wires to the terminals provided in the main panel located on the distributor.
- 2.3.7 Turn power on to unit.
- 2.3.8 Open the main panel and locate the motor contactor. Located in the center of the motor contactor is a manual override button. Slide this manual override to the left engaging the contactor. As long as this override is held the pump will run supplying hydraulic pressure to the system.
- 2.3.9 Jogging the power select is accomplished by starting the pump as outlined in the previous section and then pressing in on the manual overrides located on the ends of the solenoid valves.
- 2.3.10 Jog Power Select clockwise until holes in adaptor and inner spout support pipe are in alignment. Insert 7/16 diameter bolt and tighten nut.
- 2.3.11 Jog Power Select up until lift cylinder is fully extended. Adjust up proximity sensor to point where LED comes on.
- 2.3.12 Jog Power Select counter clockwise until inner spout is aligned with number one outlet. Jog inner spout down until lift cylinder is fully retracted. Check to see that inner spout has engaged the locator ring and the outlet stub.

- 2.3.13 Loosen set screw on trigger wheel and rotate trigger wheel until outlet one/home trigger is aligned with count. and home proximity sensor. Tighten set screw.
- 2.3.14 Loosen 1/4" hold down bolt on Home trigger and align with count and home proximity sensor (LED on). Allow maximum 1/32" air gap between trigger and sensor. Tighten hold down bolt while keeping trigger aligned with sensor.
- 2.3.15 Jog inner spout up until it stops. Jog inner spout clockwise until aligned with the next outlet. Jog inner spout down until lift cylinder is fully retracted. Check to see that inner spout has engaged the locator ring and the outlet stub.
- 2.3.16 Loosen the 1/4 inch hold down bolt for the appropriate trigger and align the trigger with the count proximity sensor (LED on). Allow approximately 1/16" air gap between trigger and sensor. Tighten hold down bolt while keeping trigger aligned with sensor. Repeat this and previous step for all outlets.
- 2.3.17 Jog inner spout to number one/home outlet while watching count proximity sensor to be certain that LED lights when triggers pass it.
- 2.3.18 This completes the installation and set up of the Power Select unit. Proceed to section 3 Operation.

3 Operation

3.1 Operator Station

The operator station consists of two lights, one or two selector switches depending on the number of outlets and one push button.

Red moving light

Flashing-The inner spout is about to move.

On Solid-The inner spout is moving.

Green ready light

On solid-The inner spout is in position and ready.

Spout selector switch(s)

Indicate location of inner spout.

Reset push button

Used to initialize unit and clear error condition.

3.2 Power up

3.2.1 After the Power Select is installed turn the power on to the main panel.

3.2.2 Press the reset button. This will initialize the unit and position the inner spout on the selected outlet. When the green ready light comes on the unit is initialized and ready to operate.

3.3 Selecting an Outlet

3.3.1 4-12 hole units move the selector switch to the desired outlet number. The ready light will go out and the moving light will blink and then come on solid. While the moving light is on solid this indicates that the inner spout is traveling to the selected destination. When the moving light goes out and the ready light comes on the inner spout has arrived at the selected destination.

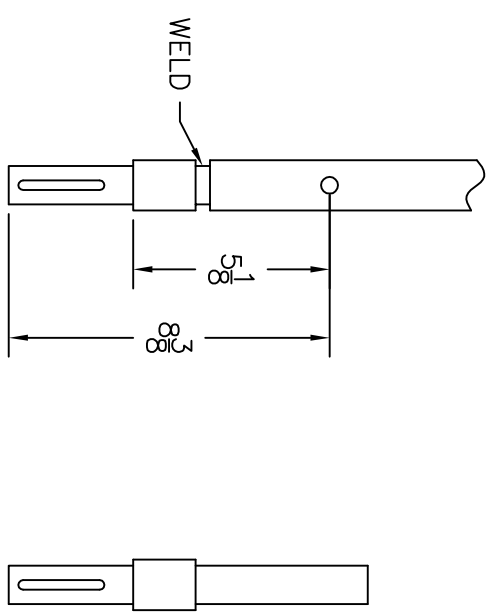
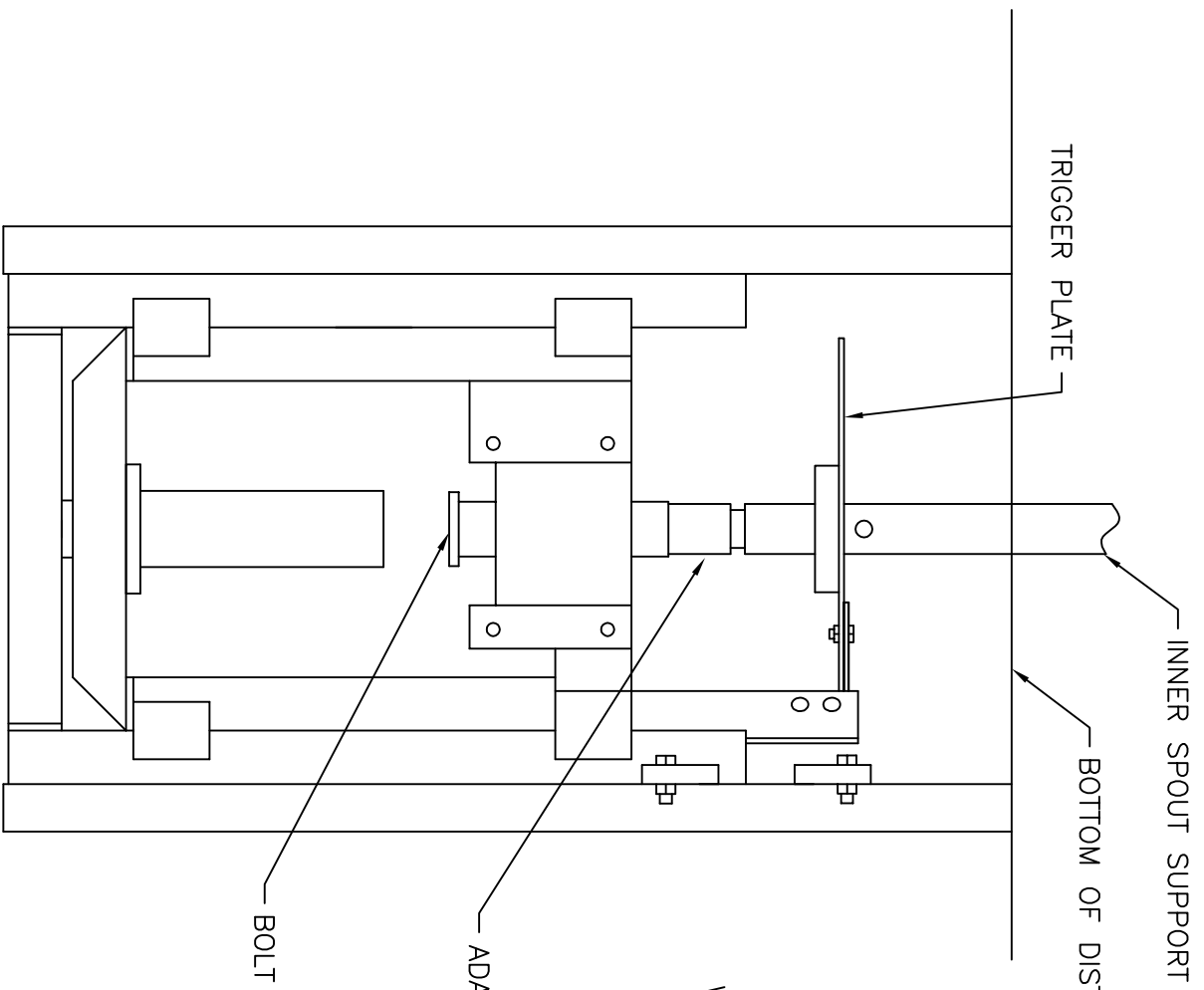
3.3.2 12-24 hole units there are two selector switches one two position and one multiple position. The two position switch selects the range from 1-12 or 13-24. The multiple position switch selects the specific hole according to which range the two position switch is set. The switches may be set in any combination of positions to select the specific outlet desired. The ready light will go out and the moving light will blink and then come on solid. This indicates the inner spout is traveling to the selected outlet. When the moving light goes off and the ready light comes on the inner spout has arrived at the selected destination.

4. **Maintenance**

- 4.1 The Power Select has been designed to be virtually maintenance free for the life of the distributor.
- 4.2 The hydraulic system is sealed from the atmosphere preventing either the leakage of oil or the ingestion of dirt. The oil, a high grade of hydraulic fluid with a -60 degree pour point, is filtered at the factory before installation. It is recommended that the system remain sealed throughout the life of the unit to prevent contaminants from being introduced into the circuits.
- 4.3 The electrical system is comprised mainly of solid state components which require no maintenance over the life of the Power Select even under severe operating conditions. The few mechanical switches in the system are heavy duty industrial type switches also sized to require no maintenance over the life of the Power Select.
- 4.4 Annual Maintenance
 - 4.4.1 Remove front cover from Power Select and check solenoid cables and sensor cables for signs of chafing or cracks in the insulation and replace as required.
 - 4.4.2 Check hydraulic lines and fittings for signs of leakage and correct as required.
 - 4.4.3 Clear away any accumulation of dust or material from inside the unit to prevent sticking of the slides.
 - 4.4.4 Remove any accumulation of dust or material from the inside bottom of the distributor housing.
 - 4.4.5 Inspect all mounting bolts on Power Select for signs of loosening and tighten as required.
 - 4.4.6 Replace the front cover.

5. **Trouble Shooting**

- 5.1 Green and Red lights both off.
This indicates a power interruption has occurred. Check power supply to main panel. Restore power to main panel. Press reset button on the operator station.
- 5.2 Green and Red lights alternately flashing.
This indicates the distributor is in a reset mode. The reset mode is a manually triggered event. Reset mode is manually triggered any time the reset button on the control panel is pressed. Allow the Power Select to complete Reset cycle.
- 5.3 Green and Red lights flashing at the same time.
This indicates that internal diagnostics in the program have sensed an abnormal event. If this occurs the first step should be to manually reset the distributor by pressing the reset button on the control panel. If the problem is corrected the ready light will come on and stay on. If after pressing reset both lights flash at the same time the following should be checked.
 - 5.3.1 System fuse located in the Main Panel has blown. Replace fuse and reset distributor using manual reset on the Operator Station.
 - 5.3.2 The inner spout is for some reason blocked from moving up, down, counter clock wise or clock wise. After clearing the obstruction try manually resetting the distributor from the Operator Station.



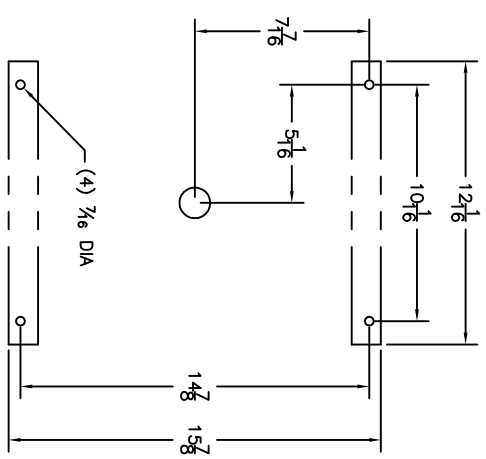
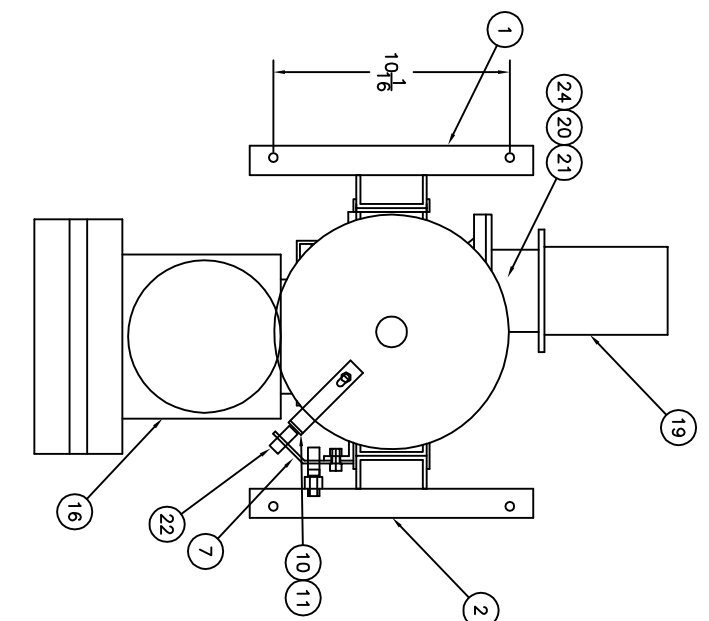
Instructions for adding Power Select drive:

- Remove the inner spout support pipe from the distributor.
- Insert new adaptor into support pipe and weld in place.
- Install support pipe through distributor bottom.
- Install trigger plate on support pipe.
- Lift Power Select to bottom of distributor and bolt in place.
- Install bolt in bottom of support pipe at bottom of gearbox.
- Align triggers with sensors.

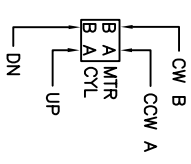
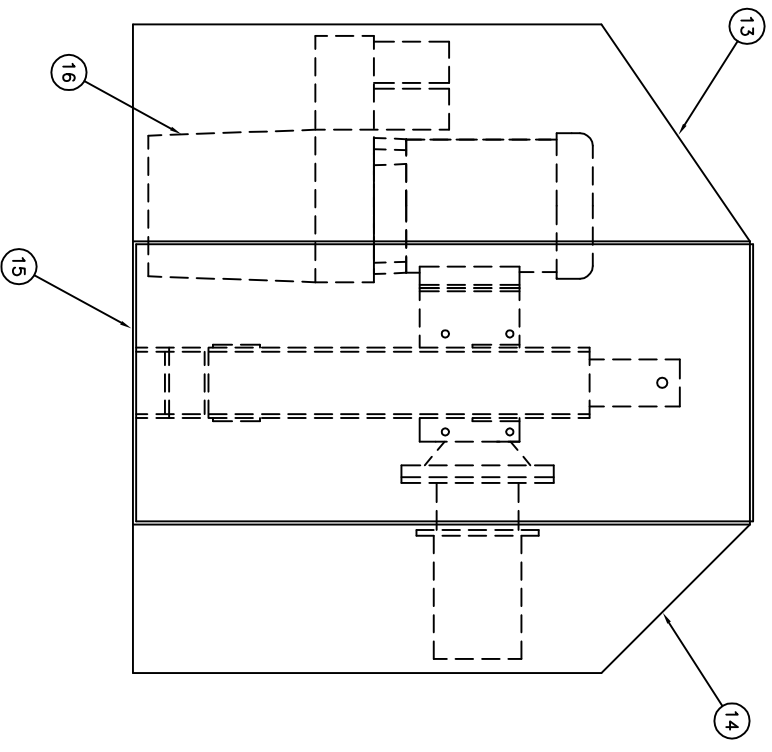
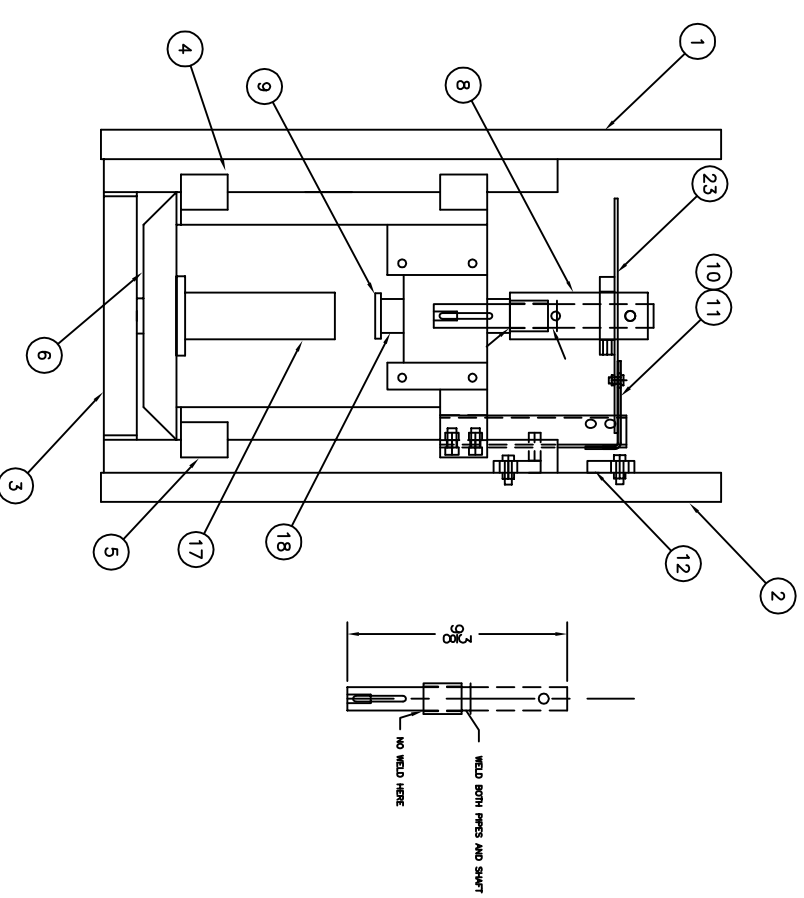
RETROFIT INSTALLATION

LIST OF MATERIALS

ITEM NO.	QTY	DESCRIPTION	IDENTIFYING NUMBER	MATERIAL
1	1	SUPPORT FRAME LEFT SIDE	503100	D-1136
1	1	SUPPORT FRAME RIGHT SIDE	503101	D-1136
3	1	SUPPORT FRAME BOTTOM CHANNEL	503102	D-1136
4	1	LIFT FRAME LEFT SIDE	503103	D-1137
5	1	LIFT FRAME RIGHT SIDE	503104	D-1137
6	1	LIFT FRAME LOWER CHANNEL	503105	D-1137
7	1	PROXIMITY MOUNTING BRACKET	503303	D-1138
8	1	INNER SPOUT ADAPTOR	503308	D-1138
9	1	RETAINING WASHER	503304	D-1138
10	1	HOME TRIGGER	503300	D-1138
11	NOTE	COUNT TRIGGER	503301	D-1138
12	2	UP/DOWN TRIGGERS	503302	D-1138
13	1	PUMP COVER	503106	D-1139
14	1	MOTOR COVER	503107	D-1139
15	1	BOTTOM COVER	503108	D-1048
16	1	HYDRAULIC PUMP	529902	D-1048
17	1	HYDRAULIC CYLINDER 1 1/2 BORE X 2 1/2 STROKE	522504	D-1048
18	1	GEAR BOX 30:1 1" BORE 56C	526001	CMF
19	1	HYDRAULIC MOTOR 4 CUBIC INCH DISPLACEMENT	529301	D-1048
20	1	MOTOR TO GEARBOX ADAPTOR	534008	CMF
21	1	MOTOR TO GEARBOX DRIVE ADAPTOR	503021	D-1112
22	REF	PROXIMITY SENSORS	528011	D-1046
23	1	TRIGGER WHEEL	NOTE	D-1054
24	1	GEARBOX ALIGNMENT RING	503309	D-1138



MOUNTING HOLE PATTERN FOR DISTRIBUTOR BOTTOM



ADAPTOR AND HOSE LIST:
 MANIFOLD T&P 2EA A3105-6-10 STR 37XORING
 MANIFOLD 2EA 10STP HEX PLUG -10
 MANIFOLD A&B 4EA A3105-6-8 STR 37XORING
 TANK IN 1EA A3105-6-6 90 37XORING
 TANK OUT 1EA 1EA 6STP HEX PLUG -6
 1EA A100-6-6 STR ORING/LENZ
 WELD COUPLINGS 3EA V-6208 HALF COUPLING -6
 PUMP IN 1EA 6TAN ORING TUBE -6
 PUMP OUT 1EA 3355-6 45 ORINGX37
 CYLINDER 3EA A3355-6
 MOTOR 2EA A3405-6-10 90 ORINGX37

HOSES ALL HOSES HAVE -6 STRAIGHT 37" FEM ON ONE END
 -6 90° 37" FEM OTHER END
 TWO EACH OF THREE LENGTHS 23,10 AND 8
 HOSE LENGTH IS RAW HOSE LENGTH LESS FITTINGS
 03-21-2002 PWM

NOTE:
 1. ITEM 11 QTY ROD IS 1 LESS THAN NUMBER OF DISCHARGES.
 2. WELDMENT SET 503400 INCLUDES ITEM 1-9,12,13,14,15,21,23,24.

REV	DATE	DESCRIPTION	JCS
2	06-17-2000	ADDED DISTRIBUTOR BOTTOM HOLE PATTERNS	JCS
1	06-16-99	ADDED FEEL 2K, UNIFORM PROXIMITY SENSOR & SPURT TO OPPOSITE SIDE, ADDED P/N & NOTES	JCS
-	05-08-99	STANDARD RELEASE	JCS

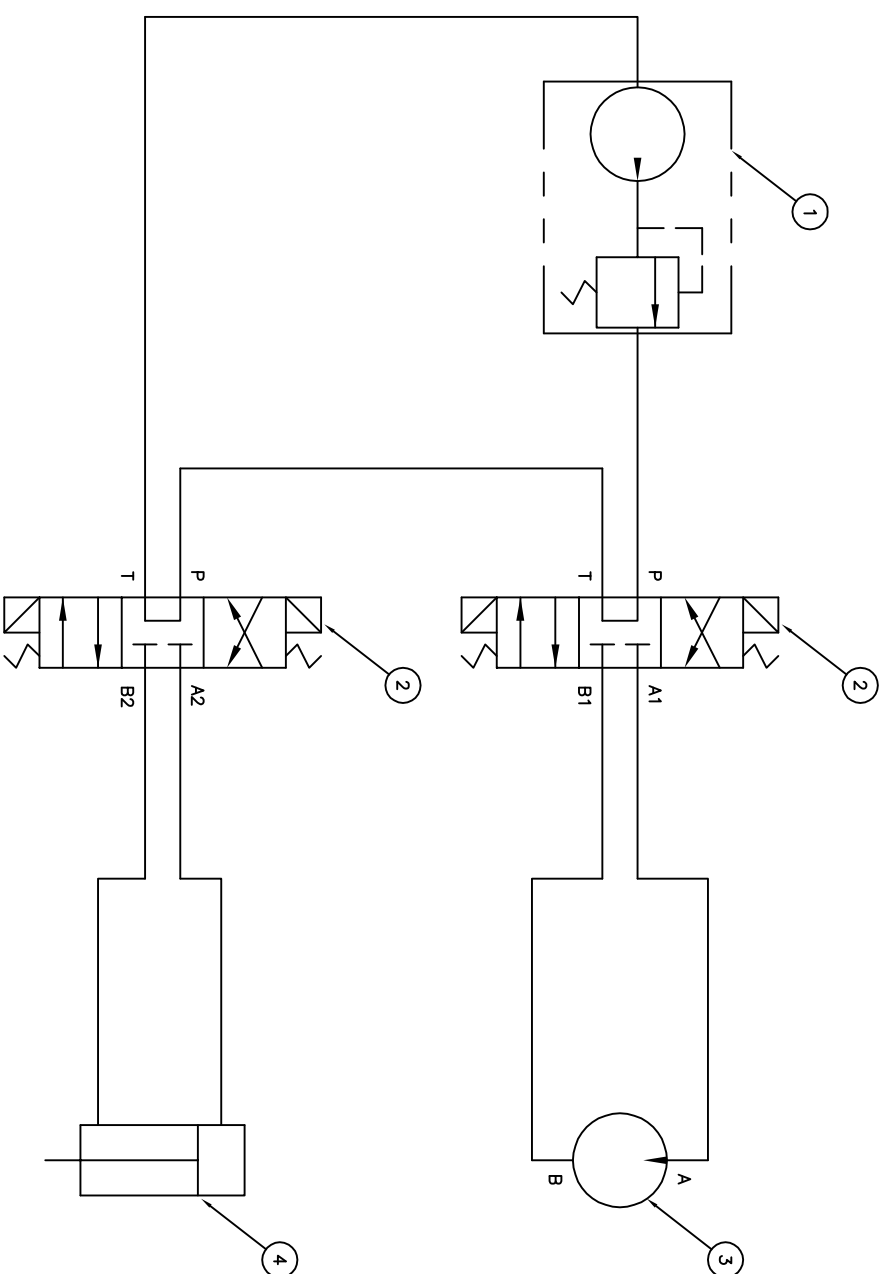
UNLESS OTHERWISE SPECIFIED
 DIMENSIONS ARE IN INCHES
 FRACTIONS TWO PLACE DECIMALS
 ± 1/8
 DECIMALS ± .05
 TYPED PLACE DECIMALS ± .005

ST:\cmt\D-1135.dwg
 CUSTOM METAL FABRICATORS, INC.
 PHONE (785) 288-2944 FAX (785) 288-2844

TITLE: POWER SELECT GENERAL ASSEMBLY
 CUSTOM METAL FABRICATORS, HERINGTONG K.S.

DRAWN: JCS DATE: 05-05-99 JOB NO: STANDARD
 CHECKED: DWG NO:
 APPROVED: SCALE: 1/4"=1" SHT: 10F1

LIST OF MATERIALS				
ITEM NO.	QTY	DESCRIPTION	IDENTIFYING NUMBER	MATERIAL
1	1	HYDRAULIC PUMP	529902	CMF
2	2	4 WAY SOLINOID VALVE	531200	CMF
3	1	HYDRAULIC MOTOR	529301	CMF
4	1	CYLINDER	522503	CMF



NOTE:
1. USED ON DRAWING D-1135.

REV	DATE	DESCRIPTION	BY
3	09-11-2000	QUANTITIES REVIS & 3RD CHECKS. MOTOR REVIS 3 1/2" DIA. 523001 WAS 523005. CYLINDER REVIS 4 1/2" DIA. 522503 WAS 522501. PUMP REVIS 1 1/2" DIA. 529902 WAS 529905. ADDED NOTE 1.	JCS
2	07-23-97	ITEM 5 WAS CHECKED FOR FITTING 1/2" DIA. 523012 CHANGED TO SLOW MOVEMENT OF MOTOR AND CYLINDER.	PWM
1	10-10-94	ITEM 5 ADDED FOR AND PART NUMBER TO DESCRIPTION IN LIST OF MATERIALS. ITEM 4 CYLINDER WAS 1/2" DIA. 527506.	PWM
-	02-20-94	STANDARD RELEASE	PWM

GVF
CUSTOM METAL FABRICATORS, INC.
PHONE (780) 258-2144 FAX (780) 258-2844

UNLESS OTHERWISE SPECIFIED
DIMENSIONS ARE IN INCHES
DIMENSIONS ON TWO PLACE DECIMALS
DIMENSIONS ON THREE PLACE DECIMALS
DIMENSIONS ON ANGLES
TOLERANCES
+ .005
- .005

ST:cmf/abcd/4488/091048
DRAWN DATE JOB NO. STANDARD
PMM 01-17-96 PWM NO
CHECKED
APPROVED
SCALE NTS SHT 10F1

POWER SELECT
HYDRAULIC SCHEMATIC

D-1048

Mar 30, 2005 - 8:42am